



**Superior Performance. Simple Interface.**

# **BASELINE<sup>®</sup> SERIES: CONTINUOUS HYDROCARBON ANALYZERS**



Continuous monitoring of hydrocarbons in non-condensing gases.

# HIGH PERFORMANCE EFFORTLESS OPERATION

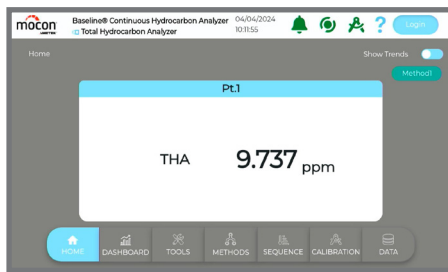
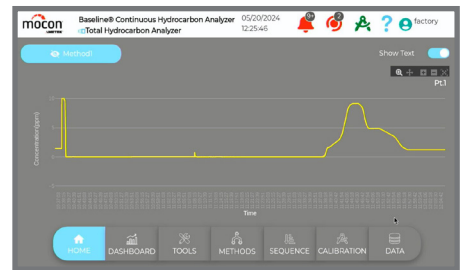
## Industry-approved gas measurement



## Reliable performance meets modern interface

The BASELINE® Series of Continuous Hydrocarbon Analyzers (CHAs) from AMETEK MOCON are instruments designed for continuous ambient or process hydrocarbon gas measurement in environmental or industrial settings. All instruments in the series are powered by our high-quality Flame Ionization Detection (FID) sensor, which enables fast, accurate measurement and low detection limits with minimal interference.

The CHA Series combines reliable, industry-proven technology with a modern interface and straightforward troubleshooting, allowing you to focus on the results.



## Operation designed for humans

High-quality data isn't enough if the instrument is difficult to use. The CHA Series features an intuitive, streamlined interface. Instruments include a range of capabilities to help simplify your process, including easily read results, real-time graphing, the ability to review historical data without pausing instrument operation, and dual display output. The CHA Series also features networking capabilities for easier connectivity, data sharing within a network, and remote diagnostics.

## Fast and Accurate – FID

Our proprietary FlowGuard electronic control regulates the delivery of fuel, air and a small portion of the sample gas to the FID. During combustion, gases are ionized, measured and reported as a concentration. This method provides fast gas measurement with some of the highest accuracy levels on the market.



## Intuitive Interface

- Modern GUI interface
- Dual display capability

## Simple Diagnostics

- On-board data storage
- Real-time graphing
- Synchronous operation and data review

## High Performance

- Low detection levels
- Fast measurement
- Automatic calibration

# INDUSTRY STANDARD FOR A RANGE OF APPLICATIONS

## The right configuration for your needs

The BASELINE CHA Series is available in a variety of configurations with optional components for single or multi-point sampling. CHA Series instruments also feature a small footprint and are easy to incorporate into your existing instrument setup thanks to built-in connectivity and data storage.

### BASELINE CHA Series Models

Configuration	Description
Total Hydrocarbons (THA)	Versatile total hydrocarbon analysis down to ppb levels.
Methane/Non-Methane (MNME)	Oxidation catalyst allows precise measurement of methane and non-methane gases.
Hydrocarbons & CO <sub>2</sub> Total Carbon (TCA)	Catalytic methanizer allows accurate reading of combined CO/CO <sub>2</sub> measurement

### Industries and Applications

Industry	Unique needs	Suggested instrument
Specialty Gas	Specialty gas producers require robust quality control and quality assurance to keep products consistent and customers happy. Accurate trace level measurements and a reliable instrument are vital to maintaining tight operations.	THA and TCA
Oil & Gas	For oil and gas companies, downtime means major financial loss. That's why a rugged instrument with user-focused diagnostics and troubleshooting is essential.	THA
Environmental	Whether collecting ambient air quality data or monitoring emissions to stay below required levels, environmental applications require highly accurate results and easy access to data for compliance and reporting.	THA and MNME
Semiconductors		



# BASELINE® SERIES: CONTINUOUS HYDROCARBON ANALYZERS

PRODUCT BROCHURE

## Technical Specifications

Models	THA	MNME	TCA
Detector	Flame Ionization Detector (FID)	Flame Ionization Detector (FID) w/ Oxidizer	Flame Ionization Detector (FID) w/Methanizer
Ranges (as CH <sub>4</sub> )	User definable based upon calibration: • Very Low - 0.01 ppm to 200 ppm • Low - 0.1 ppm to 2,000 ppm • Medium - 0.3 ppm to 20,000 ppm • High - 0.003% ppm to 100% ppm	User definable based upon calibration: • Low - 0.03 ppm to 50 ppm • Medium - 0.06 ppm to 500 ppm • High - 0.15 ppm to 5000 ppm	User definable based upon calibration: • Low - 0.1 ppm to 100 ppm
Accuracy, repeatability	+1% full-scale response	+1% full-scale	+1% full-scale
Drift, zero	+0.025% full-scale over 24 hours	+0.01% full-scale, 24 hours	+0.01% full-scale, 24 hours
Drift, span	+1% full-scale, 24 hours	+1% full-scale, 24 hours	+1% full-scale, 24 hours
Response time	T90 < 5 seconds	T90 < 30 seconds	T90 < 30 seconds
Sampling	Internal single or multi-point, (pump optional)	Internal single or multi-point, (pump optional)	Internal single point (pump optional)
Alarms	Multilevel concentration and fault alarms, audible and visual	Multilevel concentration and fault alarms, audible and visual	Multilevel concentration and fault alarms, audible and visual
Calibration	Programmable automatic or manual calibration	Programmable automatic or manual calibration	Programmable automatic or manual calibration
Support gas requirement	• UHP Hydrogen (H <sub>2</sub> ) 30 cc/min • Zero air - 175 cc/min • Span gas - methane is typical <i>*Fuel blend options available</i>	• UHP Hydrogen (H <sub>2</sub> ) 35 cc/min • Zero air - 175 cc/min • Span gas - methane/propane is typical <i>*Fuel blend options available</i>	• UHP Hydrogen (H <sub>2</sub> ) 35 cc/min • Zero air - 175 cc/min • Span gas - methane w/ CO or CO <sub>2</sub> typical <i>*Fuel blend options available</i>
Display	Graphical Touch Display, 7" (17.8 cm) diagonal		
Outputs	<ul style="list-style-type: none"> <li>• LAN/Ethernet, RS-485</li> <li>• Optional outputs                             <ul style="list-style-type: none"> <li>(a) Analog, programmable 0-20mA/4-20mA isolated output; Relays, 5 programmable From A relays rated to 3A @230 VAC</li> <li>(b) If (a) is installed, 8 additional analog outputs and up to 16 additional relays can be added</li> </ul> </li> </ul>		
Operating temperature	32 to 104° F (0 to 40°C)	32 to 104° F (0 to 40°C)	32 to 104° F (0 to 40°C)
Operating humidity	0 to 95% (non-condensing)	0 to 95% (non-condensing)	0 to 95% (non-condensing)
Configuration	Benchtop or 19" (48.3cm) rack-mount, 3U	Benchtop or 19" (48.3cm) rack-mount, 3U	Benchtop or 19" (48.3cm) rack-mount, 3U

## Accessories

### Preventative Maintenance Kit

- Includes all necessary parts

### Gas Generators

- Hydrogen generator
- Zero air generators

### Service & Support Options

- Start-up and training, one day onsite

## Other Specifications

### Physical Specifications

- 5.25" H x 19" W x 16.25" D (13.02 cm x 48.26 cm x 41.28 cm)
- <20 Lbs. (9.07 kg)

### Electrical Specifications

- Voltage: 100 - 240 VAC 50/60 Hz, 1A



© 2024 AMETEK MOCON. All rights reserved. Subject to modification without notice.  
PB-PROA-0166-BASELINE CHA-0524-1.0

AMETEK MOCON  
7500 Mendelssohn Ave. N  
Minneapolis, MN 55428 USA  
info.mocon@ametech.com  
www.ametekmocon.com